

# **GTC-XPI3566-CM4 Upgrade Guide(EN)**

**V1.0**

Geniatech

**REVISION HISTORY**

Time	Version	Reason of change	Author	Remake
10/08/2024	1.0	Create a document	CM	

## 1. Download link:

### 1.1 Driver download link:

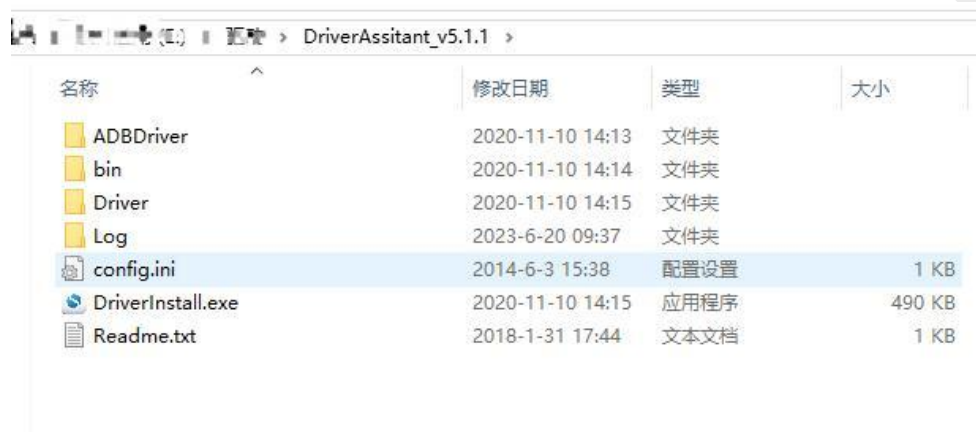
<https://mega.nz/file/tgFXyCRC#ZsNvsWpkaxmreSemrrsE6OvAvFBa4HTUVLLmpVPVq6Y>

### 1.2 RKDevTool's&FW download link:

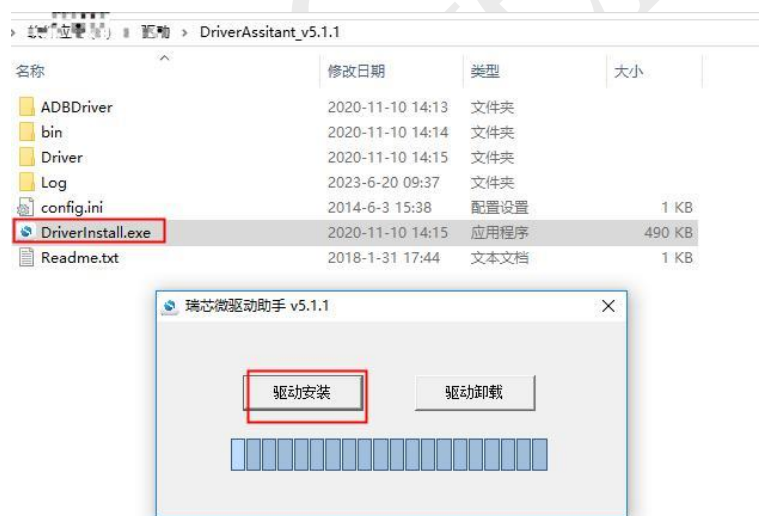
Please contact the staff.

## 2. Install the RK USB driver:

(1) Download the driver and unzip it, as shown below:



(2) Run "DriverInstall.exe" -> Click "驱动安装", as shown below:



(3) If the installation is successful, click "确定".

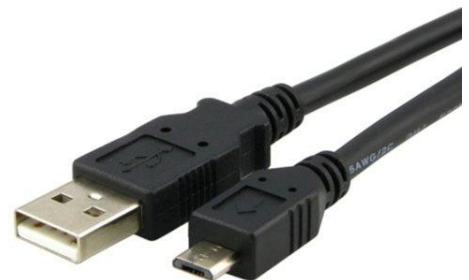


### 3. Burning system:

#### 3.1 Preparation for burning:

- XPI3566-CM4 Device
- Host (e.g. Windows10)
- Good Micro USB burning line

As shown in the picture below:



Note: If you are burning a different system (such as Android burning to linux, or linux burning to Android) or burning again after a failure during the burning process, erase the flash first (see 3.3 for details). If not, The erase flash step can be ignored.

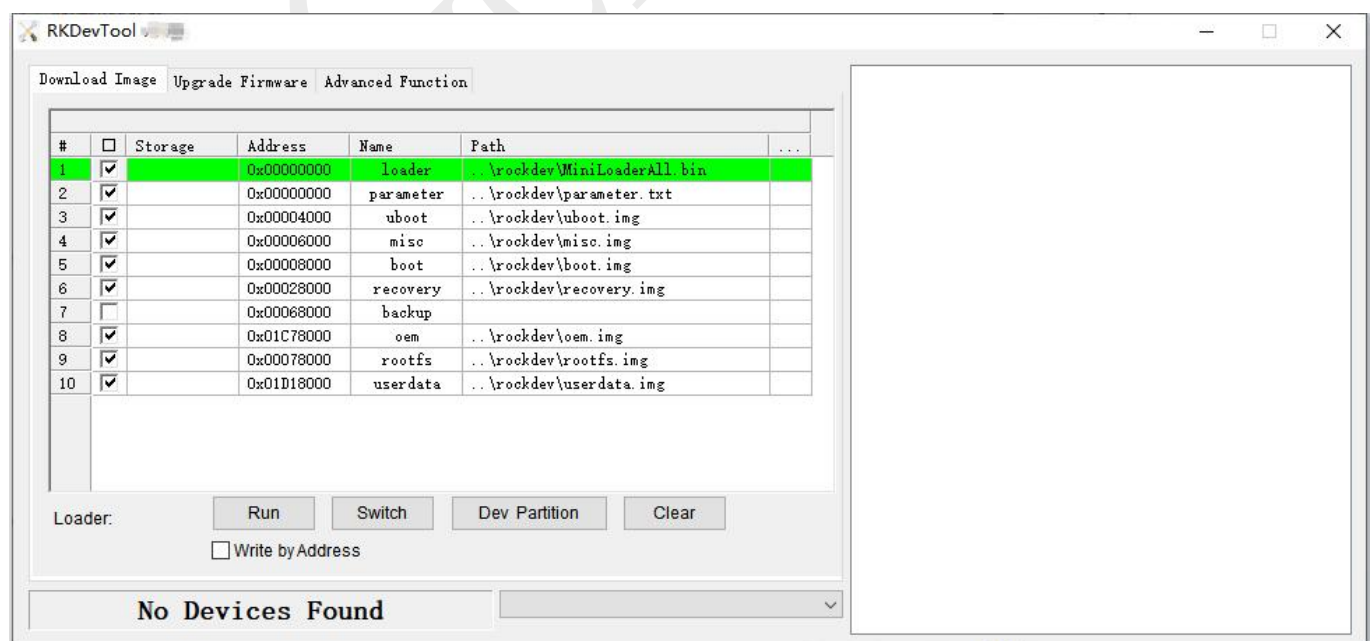
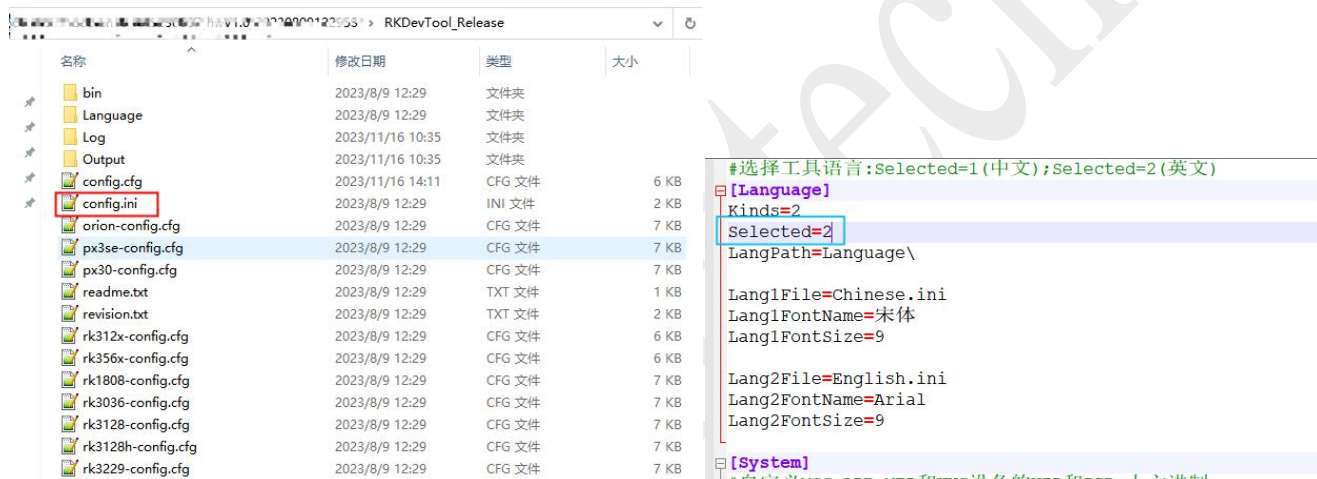
## 3.2 Burning procedure:

(1)Download and unzip the firmware as shown below:



(2)Go to the RKDevTool\_Release folder, open the config.ini file and change Selected=2 to make the tool language displayed in English,then double click to run RKDevTool.exe.

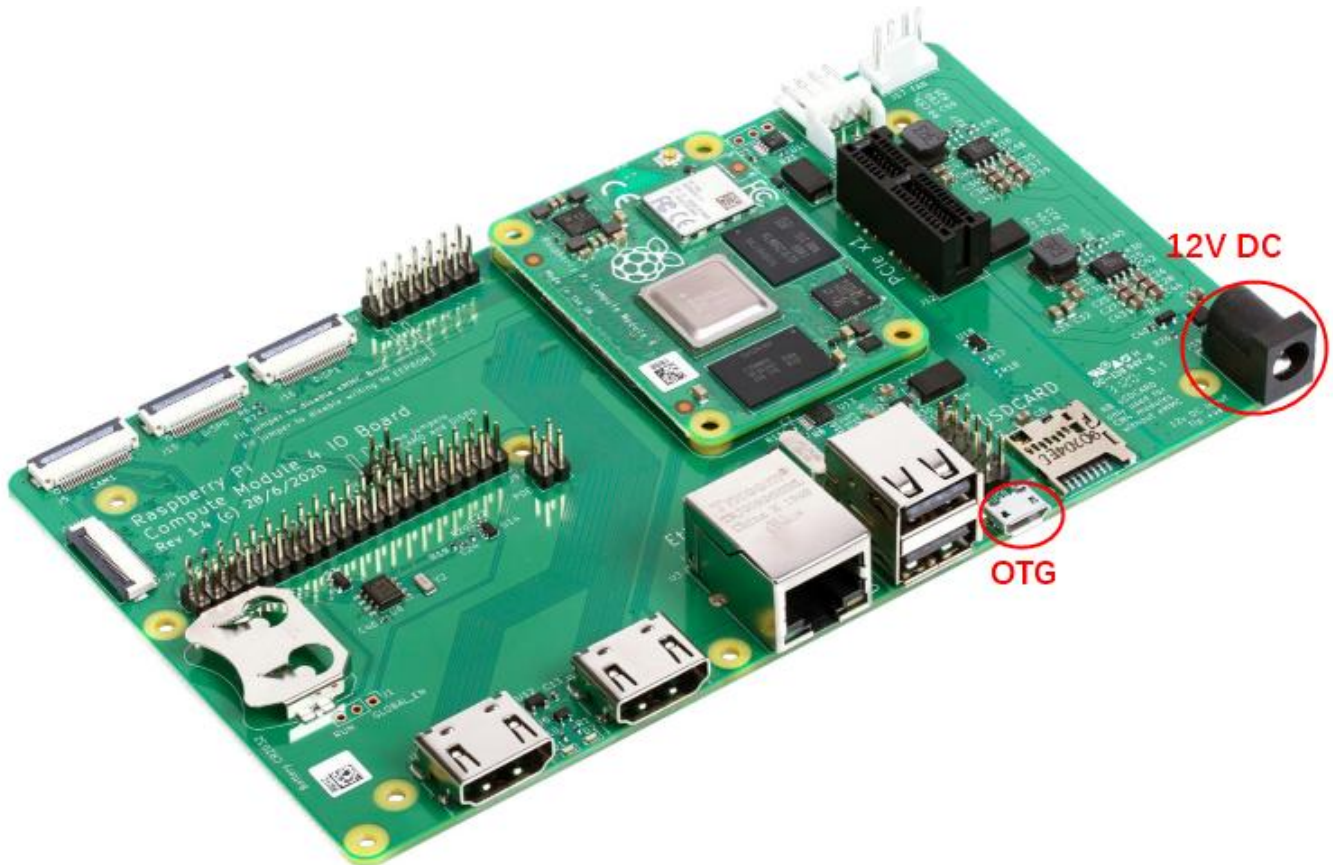
Note: If AndroidTool isn't included in the system package, please skip this step



(3) Enter upgrade mode:

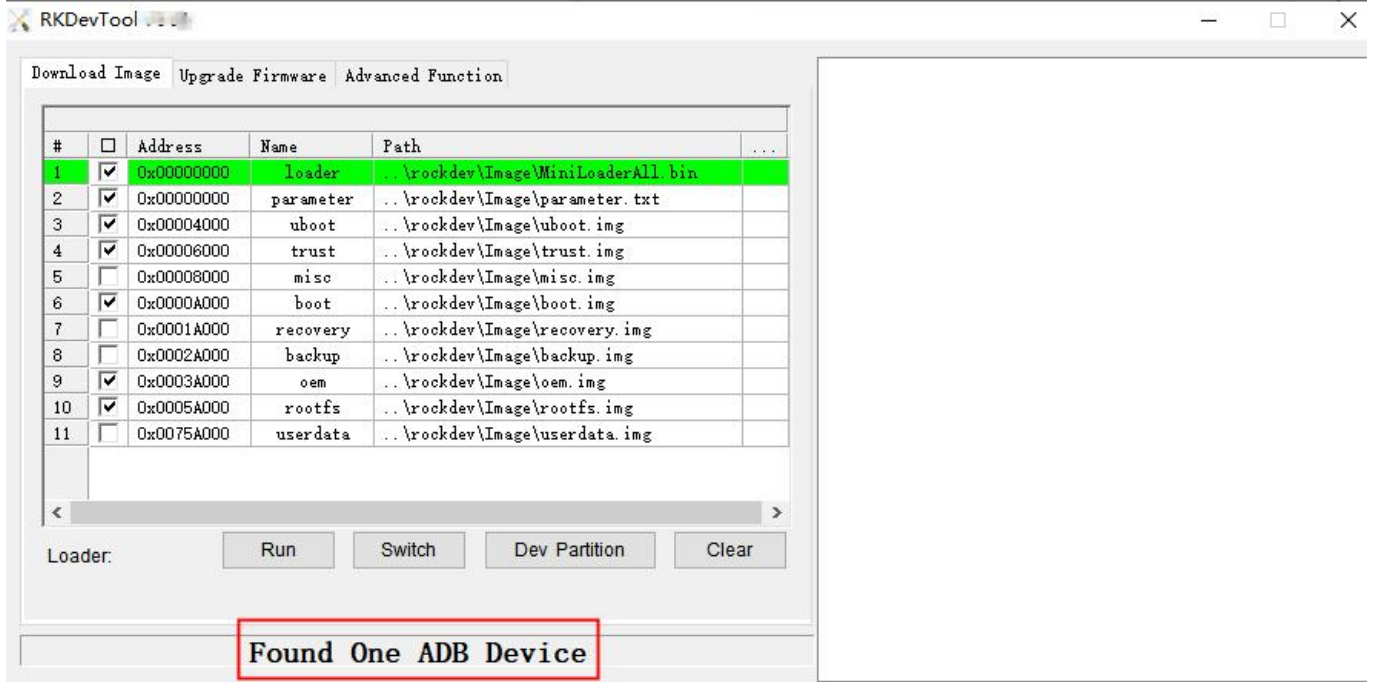
We need all the equipment ready before we can write the firmware.

- Connect the device to the host via the Micro USB cable and power it on.

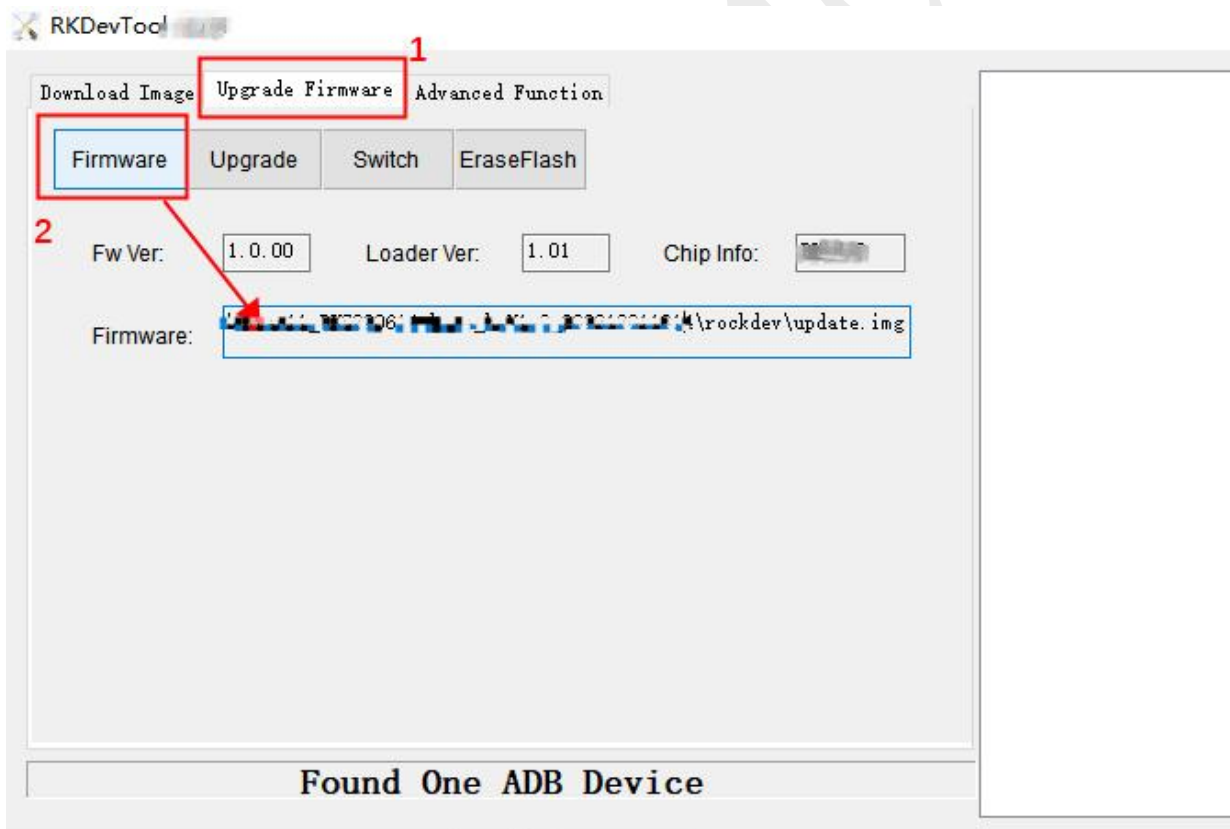


- In RKDevTool.exe you can see the following message: Found One ADB Devices.

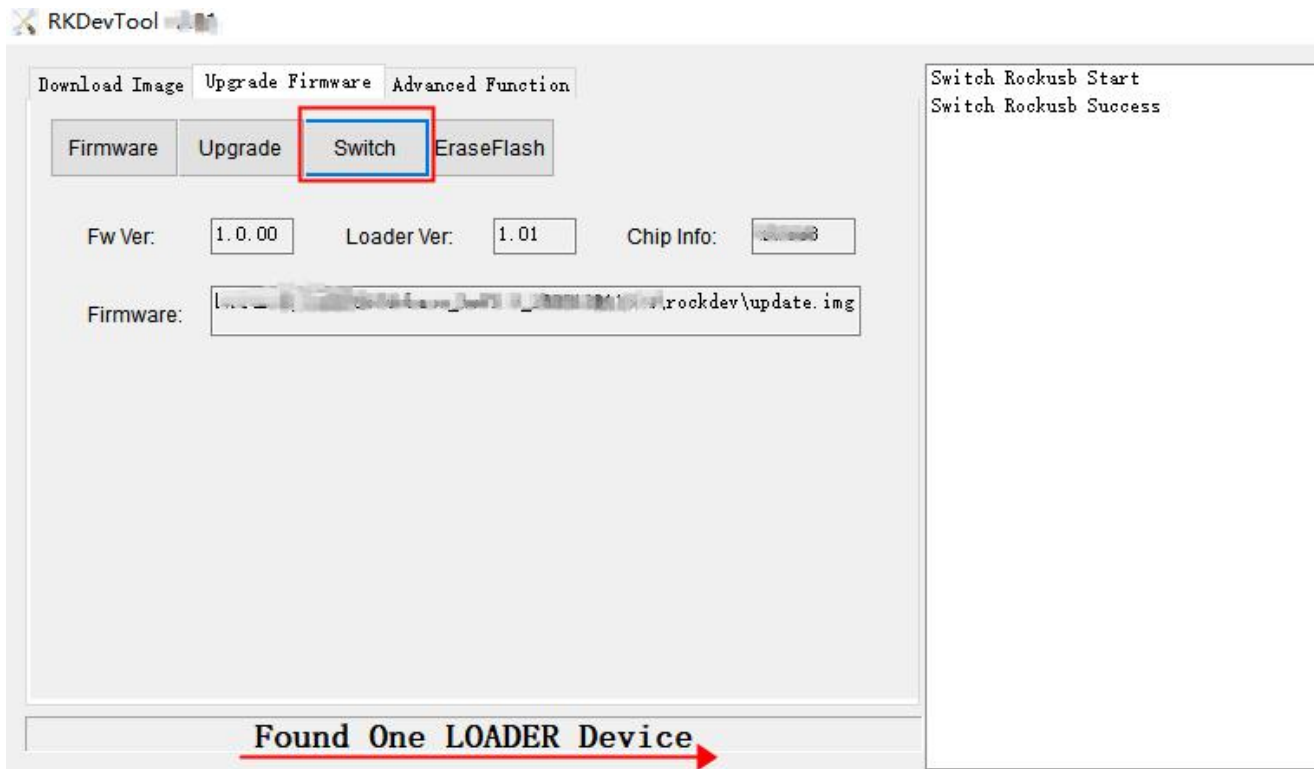




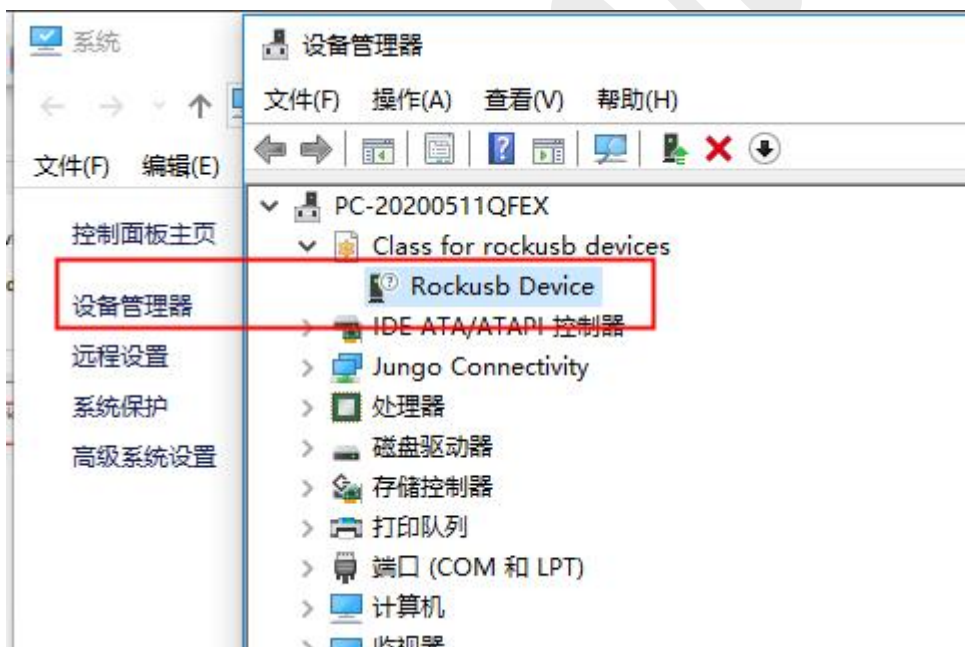
(4) Go to the "Upgrade Firmware" page and click "Firmware" to import the update package update.img (update.img is in the /rockdev folder).



(5) Click "Switch" to enter the burning mode; Burning tool (RKDevTool.exe) prompt: Found One LOADER Device.

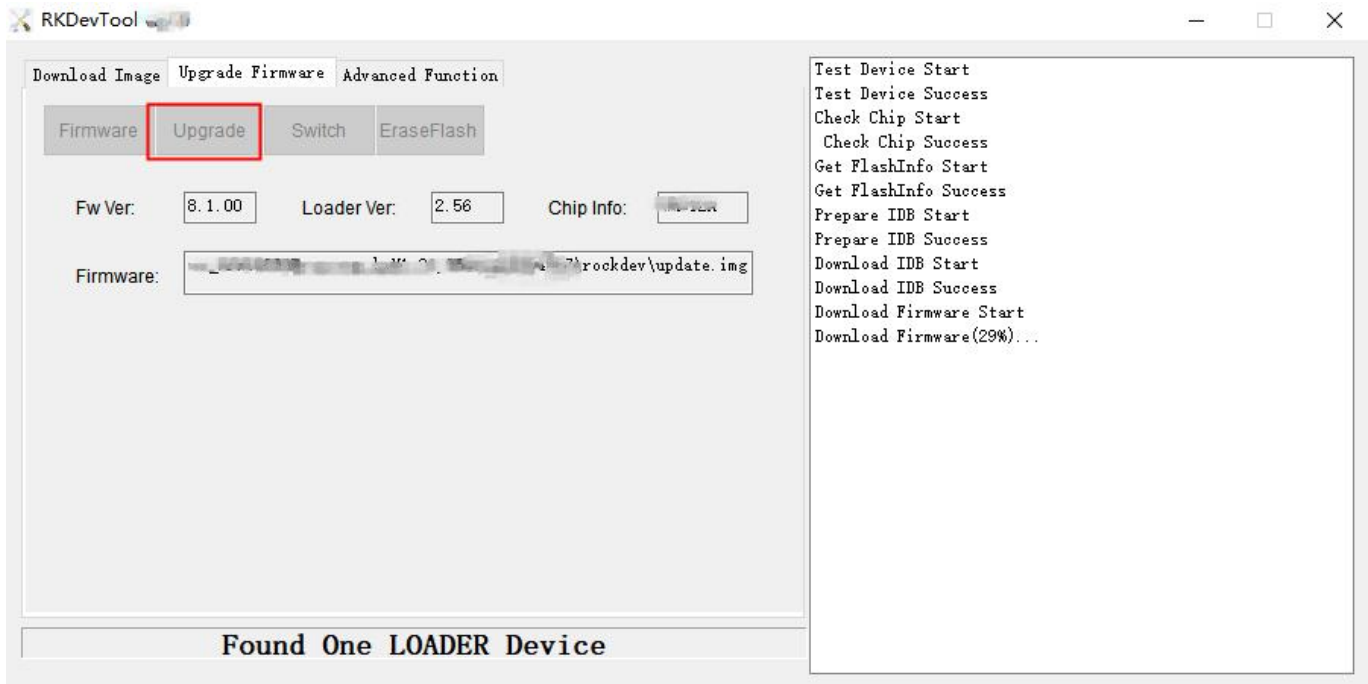


Note: When RKDevTool.exe finds the Loader Device, you can also find the RK Device in PC-> Device Manager. If no, check whether the driver is correctly installed or properly installed.

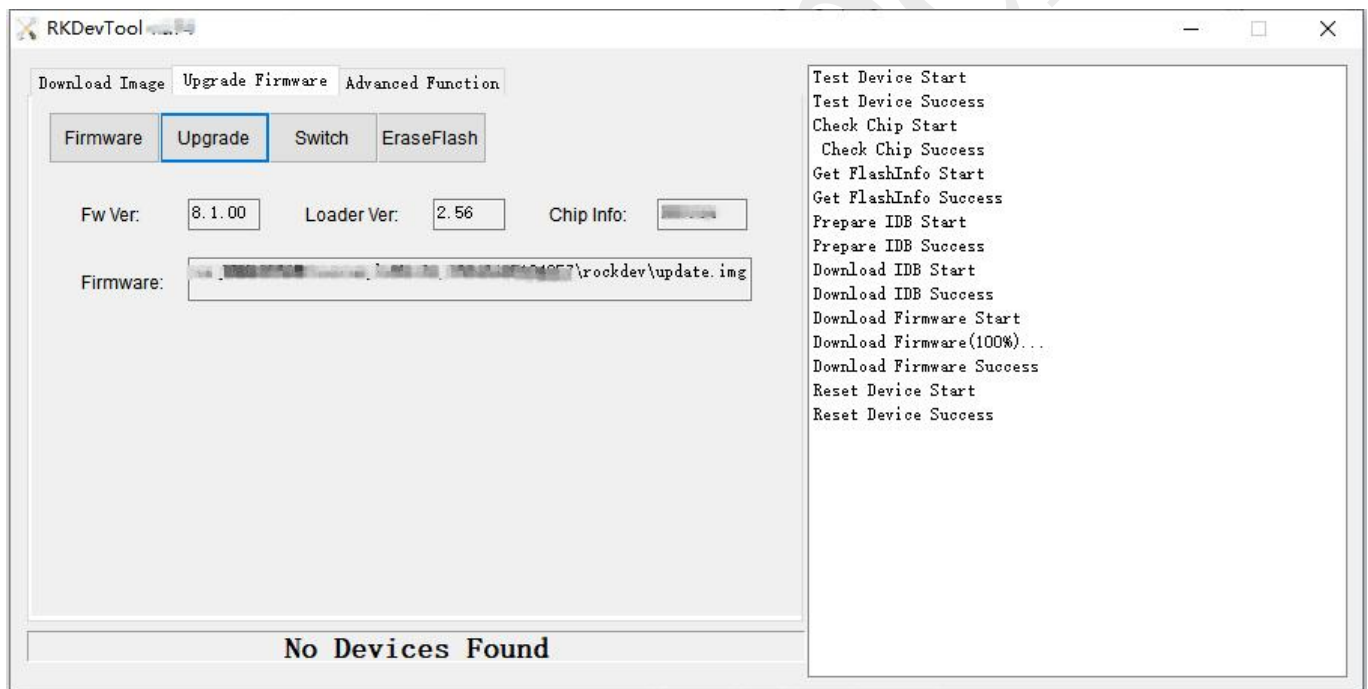


(6)Click "Upgrade" to start burning...





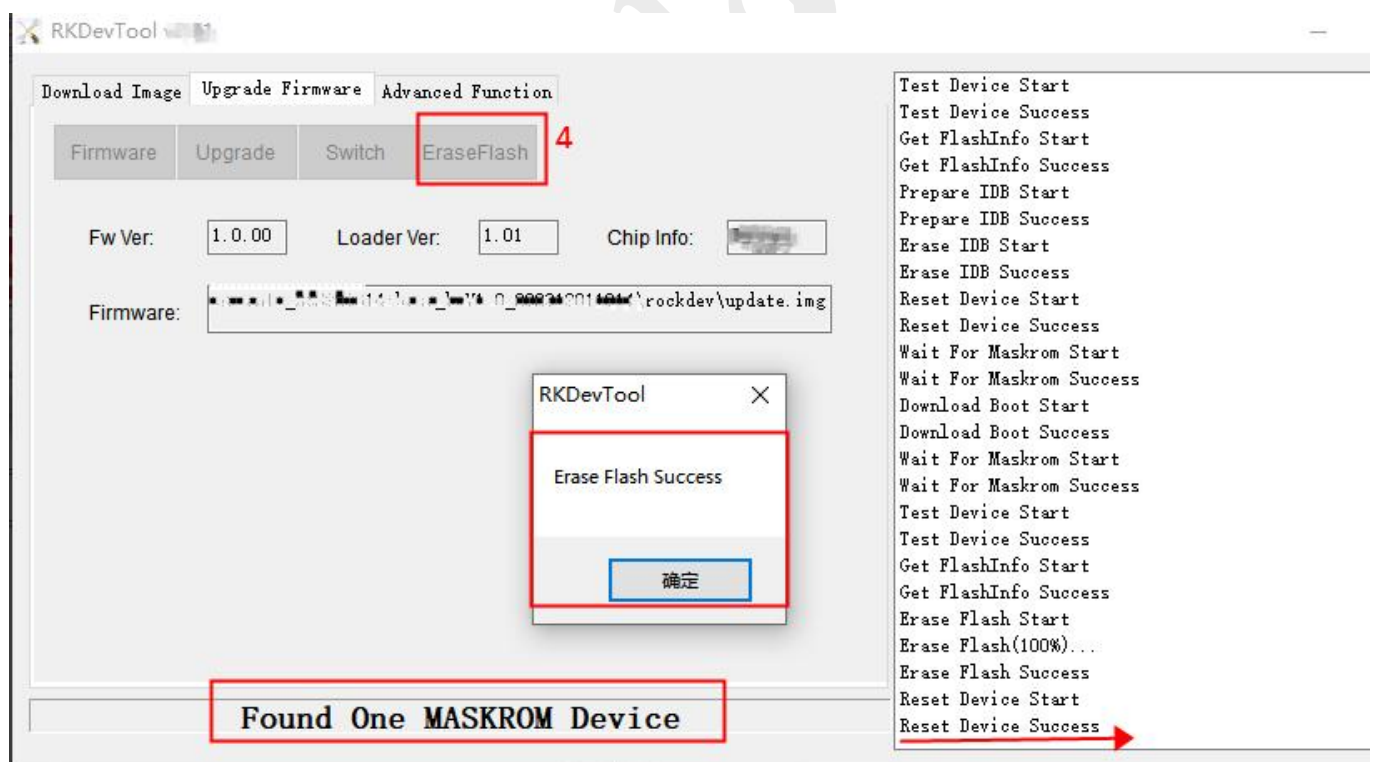
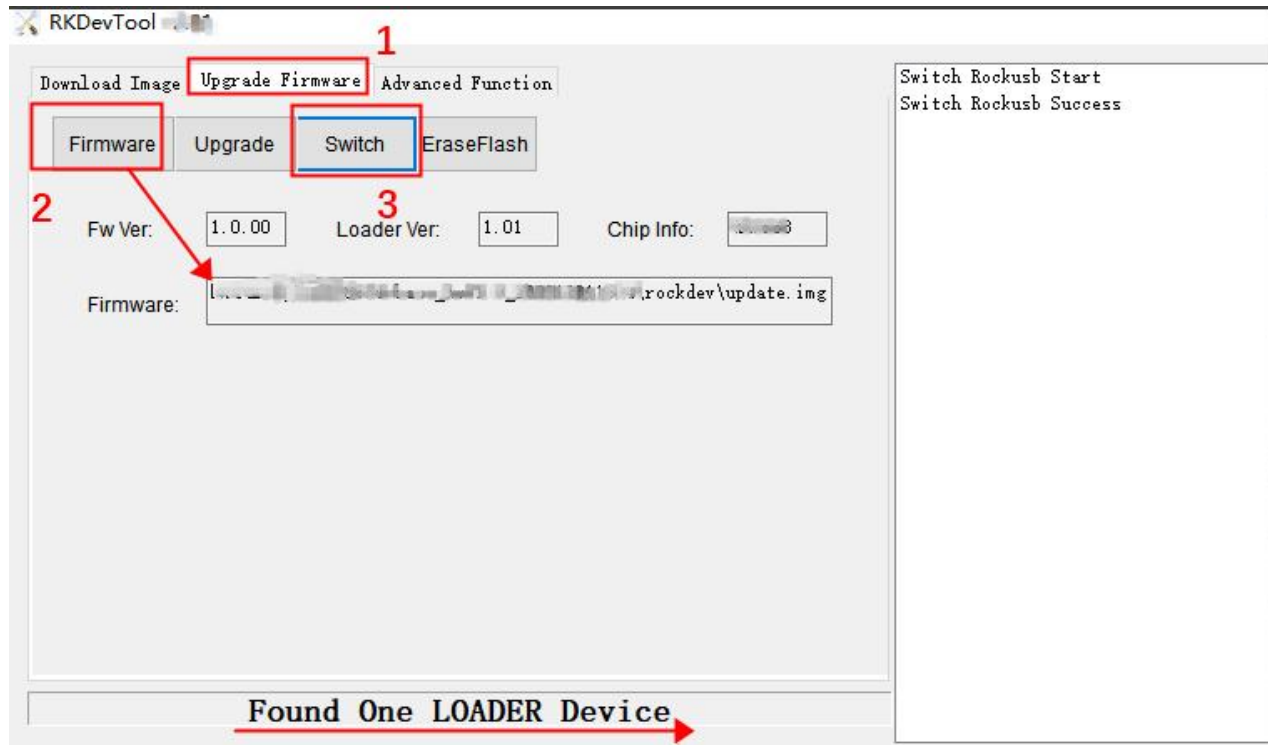
(7) Burning is complete.



## 3.3 Erase flash (not necessary)

If the BOX is burned from Android to Linux, or from Linux to Android, or re-burned after a failure in the burning process; Delete the Flash first.

(1) Select the burning package for Android or Linux (update.img). Click "Clear flash". In the right dialog box, "Erase flash successfully" is displayed and click "OK" in the pop-up dialog box. Enter the MASKOM mode.



## 4. Q&A:

### 4.1 Analysis of burning failure

**Q:** The Download Boot Fail occurs during the write process, or an error occurs during the write process, as shown in the following figure:

**A:** It is usually due to the poor connection of the USB cable used, inferior cable, or the insufficient drive ability of the computer USB port, please replace the USB cable or the computer USB port check.

