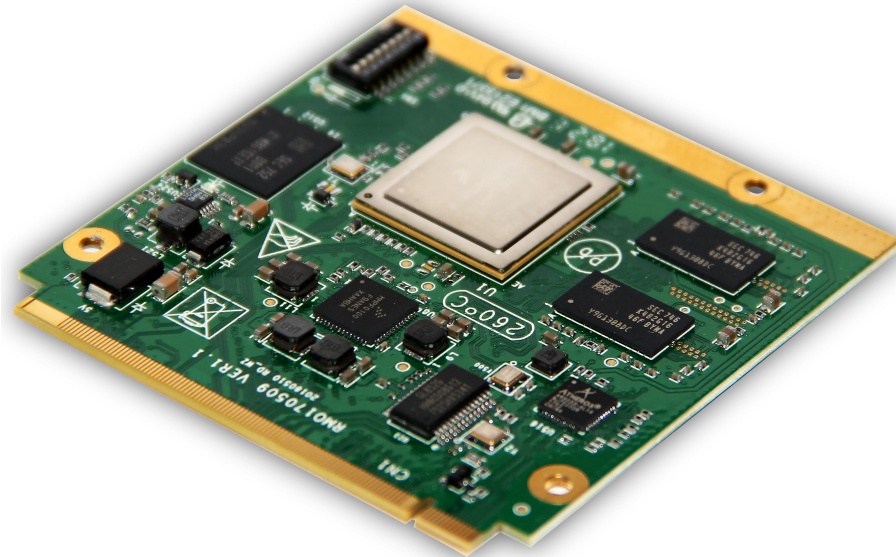


SOM-iMX6Q-Q7 SPEC



Overview

The SOM-iMX6Q-Q7 is a System on Module (SOM) board based on the i.MX6 series of SoCs. The i.MX 6 series of applications processors combines scalable platforms with broad levels of integration and power-efficient processing capabilities particularly suited to multimedia applications. The i.MX 6Quad processors feature advanced implementation of the quad ARM Cortex-A9 core, which operates at speeds up to 1.2 GHz. They include 2D and 3D graphics processors, 1080p video processing, and integrated power management. Each processor provides a 64-bit DDR3/DDR3L/LPDDR2 memory interface and a number of other interfaces for connecting peripherals, such as WLAN, Bluetooth, GPS, hard drive, displays, and camera sensors.

Specifications

Processor

i.MX6Q, 4 x Cortex-A9@1.2 GHz

powered by

Memory/Storage

1GB LPDDR3

8GB eMMC5.1

Qseven Edge Connector Interfaces:

PCIe v2.0 x 1 Lane

SATA 3.0 x 1

Gigabit Ethernet, 10/100/1000Mbps

HDMI v1.4 x 1

LVDS x 2

USB 2.0 Host x 4

USB 2.0 OTG x 1

AC97 Audio

8-Bit SD/MMC

PWM

Debug UART x 1

Data UART x 2

CAN x 1

SPI x1

I2C x 3

GPIO x8

OS-support

Linux 4.9.88_2.0.0

Android 8.0/7.1

Windows 10 IoT

Power, Mechanical and Environmental

Power: +5V

Dimensions: 70 x 70mm Qseven R2.0 Compatible

powered by

ShenZhen Geniatech Inc., Ltd.

TEL:+86-755-86028792
FAX:+86-755-26710210

Seeing is believing

18th F, G.D.C Building, No.9 Gaoxin Middle 3rd Rd , Nanshan District, Shenzhen City, China

Operating Temp: -40°C to +85°C

RoHS and Reach compliant

powered by

Geniatech 