

Qualcomm QCA9563+QCA8337+QCA9886 gigabit cable scheme is adopted, which not only supports 2.4GHz and 5GHz wireless networks, but also integrates LTE functions. Moreover, GT-IoT interface is reserved to support extended RF function modules, such as Zigbee, LoRa, Z-Wave, BLE, etc. And Geniatech can combine many set-top box products to form lead-by-function set-top box products (accepting customization).

**Processor**

Qualcomm processor and its family inside, by default using QCA9563

**With flexible**

Can be used for embedded in any Android and Linux platform

**Customizable**

Support various functions customization

**Applications**

Home router, commercial router, hotel network, entertainment and smart home

**Highlights**

Low power consumption and ease of use of microcontroller

High performance and scalability of application processors

**Advanced security**

Data encryption, high security level

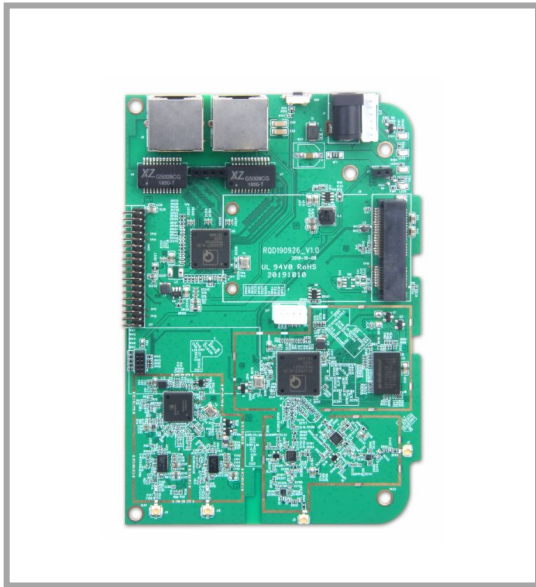
**Wide operating temperature**

Commercial grade operating temperature: -20°C to +80°C

Industrial grade operating temperature: -40°C to +80°C

**Enterprise service**

Provide comprehensive quality assurance, after-sales service and technical support



## Product Specification

CPU	QCA9563
5G WiFi	QCA9886
Switch	QCA8337
RAM	128MB
ROM	16MB
OS	Open WRT
Network	
WiFi ---2.4G	802.11 a/b/g/n/ac 2.4GHz/5GHz
WiFi ---5G	
WiFi Frequency Range	2.400~2.497GHz, 4.900~5.845GHz
Ethernet port	RJ45*2 10/100/1000Mbps
Mini PCIe Interface	4G/LTE SIM Card Slot
GT-IoT Interface Functions	
LoRa	Optional
BT 5.0/BLE	Optional
ZigBee	Optional
Z-Wave	Optional
Other RF Module	Customizable
Mechanical parameter	
Size (mm)	130*90
Net Weight (g)	75
Power	DC: 12V/2A
PoE	Optional