

Processor

Quad-core ARM® Cortex® A53 processor with a maximum frequency of 1.2GHz per core supporting 32 and 64bit computing

Excellent graphics processing power

HD video 8 x 1080p@30fps
Ultra HD video 4K@60fps playback

Wide range of application scenarios

Applications in the communications, smart home, smart healthcare, Internet of Things (IOT) applications

Support system diversification

Android, Linux, Windows 10

Graphics

Adreno™ 306 400MHz, PC-level graphics processing power

Camera

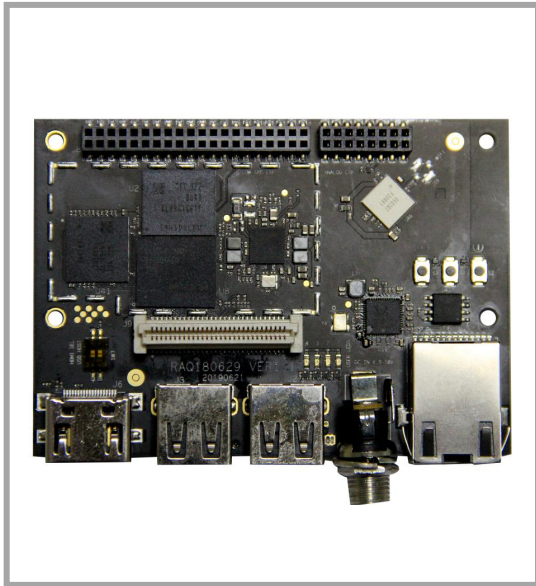
Support 13MP camera, support wavelet denoising, JPEG decoding and other hardware-level post-processing techniques.

Compatibility

Compliant with 96Boards Open Hardware Design Specification

eMMC Storage

Reliable Write and Data Reliability parameter settings ensure existing data are not corrupted when a sudden power loss event occurs.



Product Specification

CPU	Snapdragon 410C, Quad core
GPU	Qualcomm® Adreno™ 306
CPU Frequency	1.2GHz
Internal Memory	1GB/2GB LPDDR3 533MHz
Internal Storage	8GB/16GB eMMC 5.0
OS	Android 6.0 ,Linux based on Debian ,Windows 10 IoT core
Bluetooth	4.1
Built-in WiFi	WLAN 802.11 b/g/n/ac
Ethernet port	RJ45 10/100/1000Mbps
RTC	Yes
GPS	Yes
USB Interface	2x USB 2.0 type A (host mode only),1x USB 2.0 micro B (device mode only)
Micro SD Card Slot	1
Display	HDMI 1.3 – HDMI full-size type A connector (1080p HD @ 30 fps), 1x MIPI-DSI 4-lane, up to 720p 60fps or 1080p 30fps for optional display/touch
Expansion connector	1x 96boards 40 pin Low-Speed connector • UART, SPI, I2S, I2C x2, GPIO x12, DC power 1x 96boards 60 pin High-Speed connector • 4L-MIPI DSI, USB, I2C x2, 2L+4L-MIPI CSI Footprint for one optional 16-pin Analog expansion connector • Headset, Speaker, FM antenna
Size (mm)	85 X 60mm
Operating Temp	-10°C to +85°C
Power	+6.5V to +18V