

# UShow US195A User Manual

The USB 2.0 to HDMI Adapter US195A enables you to connect any monitor, LCD or projector to your PC or notebook. By using the included adapter HDMI, you can also connect HDMI monitors. In order to connect several monitors, etc. to a PC, you simply need an additional adapter for each display. You can connect up to 6 adapters to one PC. The USB 2.0 Adapter can mirror and extend the display. If you use this external USB 2.0 technology, you do not need an additional VGA card.

## Feature List

Now you can add another HDMI adapter by an external USB device.

The extra monitor can be configured to either mirror or extension Screen.

The USB to HDMI adapter supports all HDMI connector displays

You can connect up to 6 pieces The USB to HDMI adapters to one PC at same time, and each one can be different contents.

## Application

Office View your large spreadsheets across two screens with display continuity. Multitask more effectively without overlapping windows. Open attachments on one screen while reading the e-mail on the other.

Graphics Studio/Editing workstation Use second display for pallets/tools. Type documents on one screen while viewing reference material on the other.

Stock Market Use a notebook for viewing multiple screens. View charts and live data at the same time.

Entertainment View video/TV on one screen and 2<sup>nd</sup> video/TV window on the other.

## System Requirements

1.2GHz CPU or above \* 256MB RAM \* One available USB 2.0 port \* Microsoft windows 2000/XP/Vista, MAC operating system

## Output

HDMI Out

## Resolutions:

640\*480, 800\*600, 1024\*768, 1280\*768, 1280\*1024,1440\*900,1680\*1050,1920\*1080

## Package Contents:

USB 2.0 HDMI Adapter

USB cable,

HDMI Cable

Driver CD,

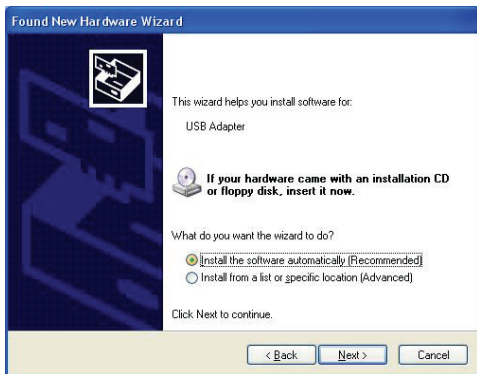
User manual

## Drive and Software Install

Installation:

Turn on the PC. Insert the install CD to CD ROM. Then plug into one of the USB port:

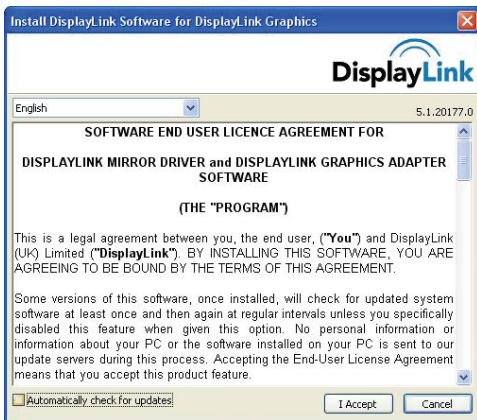
**Step1:** OS will remind a new hardware-- “USB Adapter”. Please choose “Cancel”.



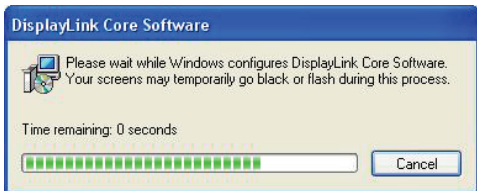
**Step2:** When insert CD, the autorun will come out. Click " Driver install or Window\Setup.exe".



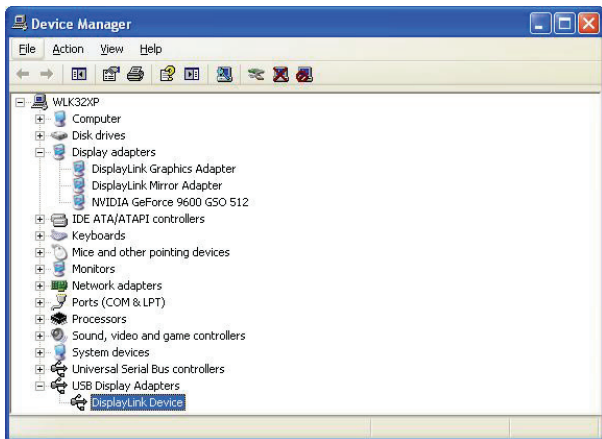
**Step3:** Click "I Accept" and then it will install "DisplayLink Graphics" driver and software.



**Step4:** Program starts to copy files.



**Step5:** When all finished, please check on Control panel, select “System”—“System properties”—“Device Manager”, you can see one device installed.



**Step6:** You will see that application icons will appear on your desktop.



## Software Users

### Mouse Right Click

Screen Resolution	<ul style="list-style-type: none"><li>800x600</li><li>1024x768</li><li>1280x720</li><li><input checked="" type="radio"/> 1280x1024</li><li>1360x768</li><li>1440x900</li><li>1600x1200</li><li>1680x1050</li><li>1920x1080</li></ul>	<ul style="list-style-type: none"><li>Updates ▶</li><li>Screen Resolution ▶</li><li>Color Quality ▶</li><li>Screen Rotation ▶</li><li>Extend To ▶</li><li><input checked="" type="radio"/> Extend<ul style="list-style-type: none"><li>Set as Main Monitor</li><li>Notebook Monitor Off</li><li>Mirror</li><li>Off</li></ul></li><li>Advanced...</li></ul>
Color Quality	<ul style="list-style-type: none"><li>Medium (16-bit)</li><li><input checked="" type="radio"/> Highest (32-bit)</li></ul>	
Screen Rotation	<ul style="list-style-type: none"><li><input checked="" type="radio"/> Normal</li><li>Rotated Left</li><li>Rotated Right</li><li>Upside-Down</li></ul>	
Extend To	<ul style="list-style-type: none"><li>Right</li><li>Left</li><li>Above</li><li>Below</li></ul>	
Extend: Extended desktop		
Set as Main Monitor		
Notebook Monitor off		
Mirror: Desktop mirror		
Off: off software		
Advanced		