



FUUGO TV for Windows Quick Guide

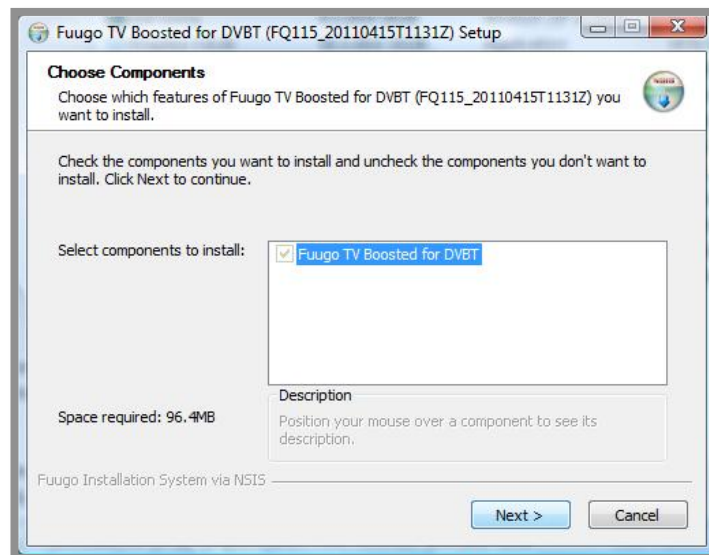
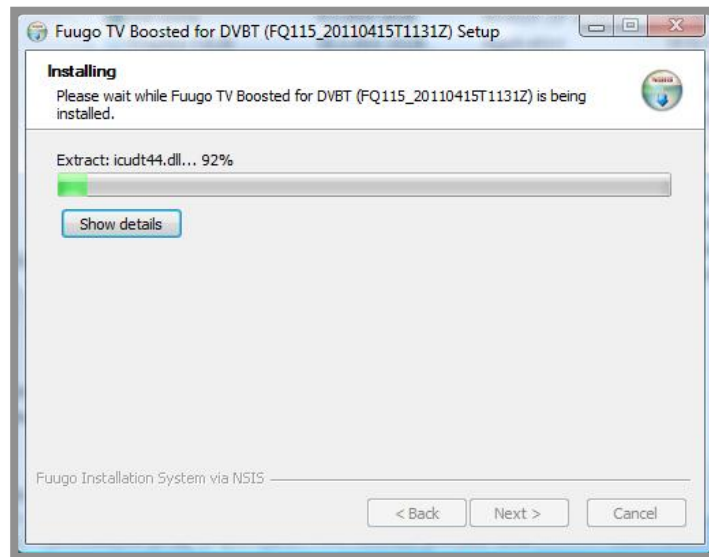


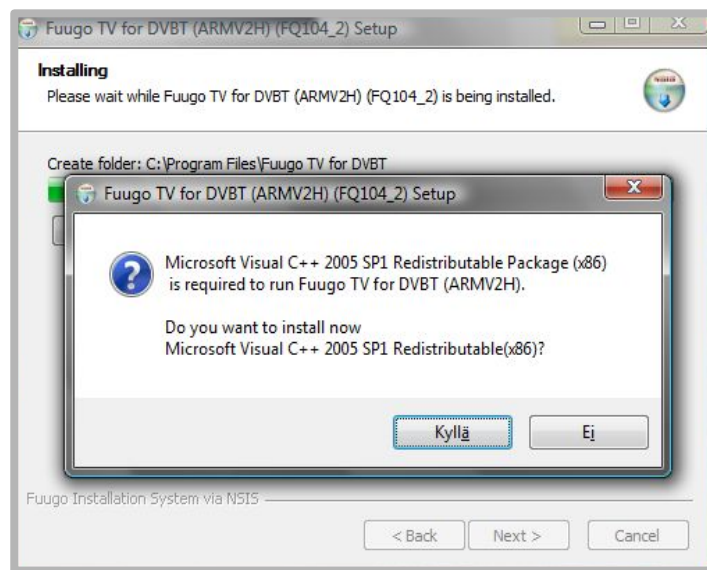
Copyright © Axel Technologies Oy 2010

FUUGO
ALWAYS SOMETHING GOOD TO WATCH

1. Installing Fuugo TV

Before you can use Fuugo on Windows, you must install the application. Fuugo can be installed by double-clicking Fuugo installer package and following on-screen instructions given in the installer illustrated below. During the installation, you also need to accept to install Microsoft Visual C++ package.





2. Initial Use

After Fuugo is installed and launched for the first time, user is asked to select the country where Fuugo is used. Country Selection is illustrated with flag symbols. Next user is asked to accept EULA, and enter a valid product key. Product key can be entered also later, however within 90 day trial period.



3. Channel Search

Behind the intro sequence, channels are searched automatically according to selected country. After channel search is finished, Fuugo starts playing the first found channel. If you face problems in channel search, please find more information on channel search in Chapter 9.

4. Switching channels

Channels can be switched by swiping left-to-right for next channel, or right –to-left for previous channel. Swiping can be done in several ways:

- Swipe on touch screen optimized Windows device
- Mouse click & swipe left/right on a normal mouse
- PgUp/PgDown press from keyboard

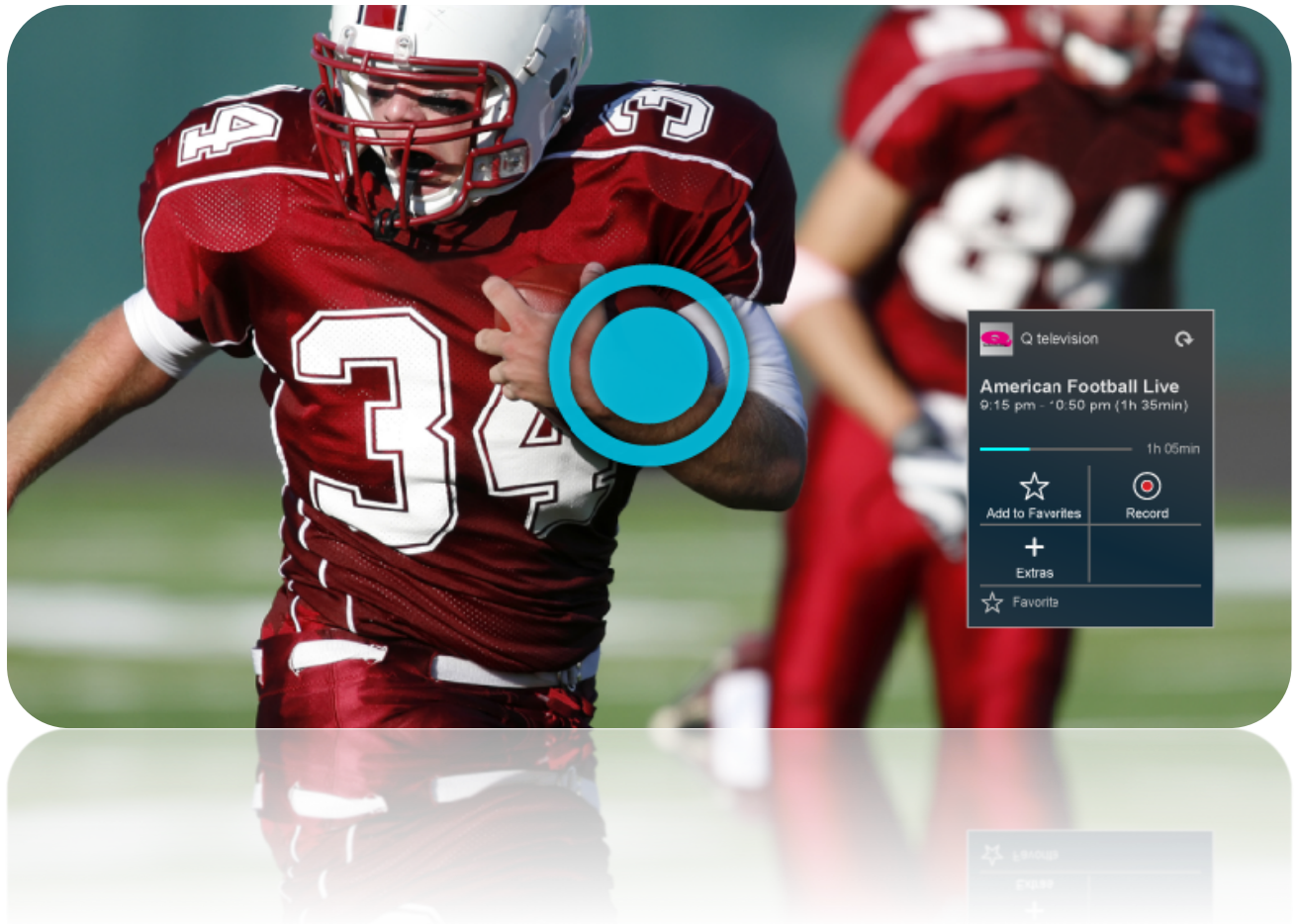


You may switch to a specific channel also via channel bar. Swipe upwards and select the logo of the desired channel from the channel bar. Also the number keys in the keyboard can be used in switching directly to a certain channel.



5. Program Specific Features

While watching a program, you may right click anywhere on the screen to access a program related Menu Card.



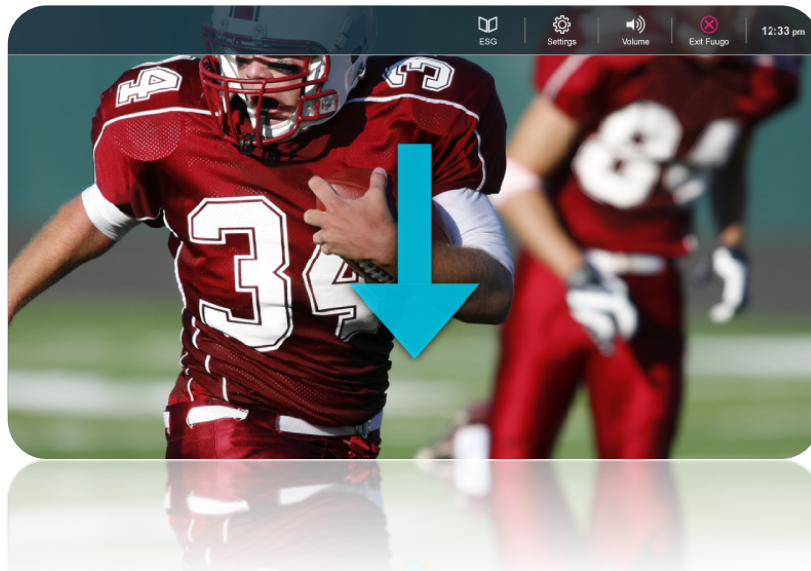
The menu card has two sides; program related actions, and program description. You may change between the sides anytime by tapping at the top of the Menu card.

In Menu card, the following actions can be performed:

- Adding the program to **Favorite** program
- Enter **Extras** view for reading extra information of the program
- **Record / Stop** recording the program

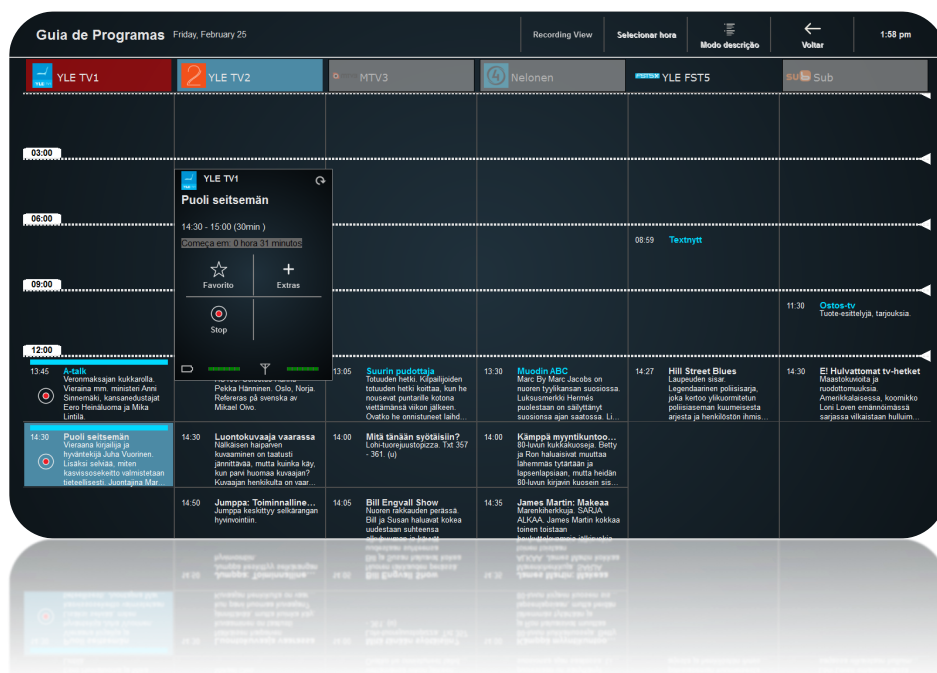
6. Program Guide

You may access Program Guide by swiping downwards and selecting “Program Guide” from the view bar.



In Program Guide, Menu card can be accessed by right clicking the screen over the program. In Menu card, the following actions can be performed:

- Adding the program to **Favorite** program
- Enter **Extras** view for reading extra information of the program
- **Record / Stop** recording the program



From Program Guide, also the recordings can be accessed by selecting “Recordings” from the top menu. In Recordings view, Menu card can be invoked by tapping over the desired recording. The following actions can be performed:

- Enter **Extras** view for reading extra information of the recorded program
- **Play** the selected recording
- **Remove** the selected recording



In the Recordings view, you can access schedulings view, where the scheduled programs are listed.

| Schedulings | | | | | Recordings | List view | Back | 2:14 pm |
|---|--|--|---|--|------------|-----------|------|---------|
| Thursday | Friday | Saturday | Sunday | All | | | | |
| <div><div></div><div>Hill Street Blues Norman Erövären. Legendarisk polisserie, som skildrar den hektiska vardagen på den överbelastade polisstationen samt personalens livsöden i gl...</div><div>19:10 - 19:56 (46min 24sec)</div></div> | <div><div></div><div>Heroes Vuodetusta. Claire ja Peter puivat tunteitaan Nathanin saattotilaisuudessa. Noah ja Lauren sieppaavat Edgarn selvitäksseen mitä Samuel su...</div><div>21:30 - 22:20 (50min 0sec)</div></div> | <div><div></div><div>SubChat Klassikoksi muodostunut tekstiviestichat. Jutustele, kysy, kommentoi!</div><div>23:50 - 03:00 (3h 10min)</div></div> | <div><div></div><div>Kings Aseista pahin. Davidin ja Michellen on yhä vaikeampi pitää suhteensa salassa - etenkin, kun joku vie Michellen kuvia sisältäneen kameran Davidin a...</div><div>21:35 - 22:35 (1h 0min)</div></div> | <div><div></div><div>Tv-utiset</div><div>12:00 - 12:05 (5min 0sec)</div></div> | | | | |
| | <div><div></div><div>Emmerdale Pahanilmänlintu. Debbie epäilee, että Danielleesta koituu harmia koko perheelle ja taitaa osua oikeaan. Daniellen laukusta löytyy jotain laitonä. Jo yrittää...</div><div>16:30 - 16:00 (30min 0sec)</div></div> | <div><div></div><div>Start! Vauhdikas automakasiini Start! tarjoaa katsojilleen koeajoja ja uutisia automaailman kuumimmista uutuksista. Kotimainen autoaiheinen...</div><div>06:30 - 07:00 (30min 0sec)</div></div> | <div><div></div><div>Miami Vice Helvettin enkeit. Vapauduttuaan vankilasta pahamaineisen moottoripyöräjengin pomo päättää kostaa parhaan ystävänsä kuoleman. Jaksoss...</div><div>22:10 - 23:10 (1h 0min)</div></div> | <div><div></div><div>South Park Mor är en smutsig slampa. Cartman är deprimerad för han vet inte vem hans far är. Han börjar utreda saken och den blir ett invecklat mysterium som h...</div><div>16:30 - 17:00 (30min 0sec)</div></div> | | | | |
| | | <div><div></div><div>Hannah Montana Mummun kioma karry. Tennesseeesta vanhalla autonomulla saapunut mummu ei yllättään ilahdukaan, kun Stewart päättävät yllättää ha...</div><div>07:40 - 08:10 (30min 0sec)</div></div> | <div><div></div><div>Eden En stenig backes omvandling. Ett inhemskt trädgårdsprogram. (22)</div><div>07:00 - 07:30 (30min 0sec)</div></div> | <div><div></div><div>Hill Street Blues Norman Erövären. Legendarisk polisserie, som skildrar den hektiska vardagen på den överbelastade polisstationen samt personalens livsöden i gl...</div><div>19:10 - 19:56 (46min 24sec)</div></div> | | | | |
| | | <div><div></div><div>Futurama Kun vanhaa professoria pitää nuorentaa, kylpyn joutuu muitakin. Leela on onnessaan saadessaan kokea nuoruuden, jota hänellä ei ole ollut.</div><div>08:00 - 08:30 (30min 0sec)</div></div> | <div><div></div><div>The Baseballs: Candy S...</div><div>09:40 - 09:50 (10min 0sec)</div></div> | <div><div></div><div>Heroes Vuodetusta. Claire ja Peter puivat tunteitaan Nathanin saattotilaisuudessa. Noah ja Lauren sieppaavat Edgarn selvitäksseen mitä Samuel su...</div><div>21:30 - 22:20 (50min 0sec)</div></div> | | | | |
| | | <div><div></div><div>Marienhof Aikaisia kolmiödraamassa. Kerstin yllättää Raulin ja Julietten yhdessä. Hän päättää, että kolmikon on parasta pysyä heiki enliään. Tom ilahtuu kuult...</div><div>11:30 - 12:00 (30min 0sec)</div></div> | | <div><div></div><div>Emmerdale Pahanilmänlintu. Debbie epäilee, että Danielleesta koituu harmia koko perheelle ja taitaa osua oikeaan. Daniellen laukusta löytyy jotain laitonä. Jo yrittää...</div><div>16:30 - 16:00 (30min 0sec)</div></div> | | | | |
| | | <div><div></div><div>Drop Dead Diva Paribldning I detta avsnitt dyker en länge efterlängad överraskande gäst upp vid Janes</div><div>11:30 - 12:00 (30min 0sec)</div></div> | | <div><div></div><div>Bionic Woman Bioniset koekaniinit. Jaime yrittää tehdä rajanvetoja yksityiselämänsä ja uuden</div><div>16:30 - 16:00 (30min 0sec)</div></div> | | | | |

When a recording is played, list of the recordings can be invoked by swiping upwards; from the list, you may select a recording you wish to play. When you swipe up again, control panel is invoked; you can pause and resume video, and jump inside the video.



7. Adjusting Volume

Audio volume can be controlled by using +/- keys in keyboard.

8. Window mode

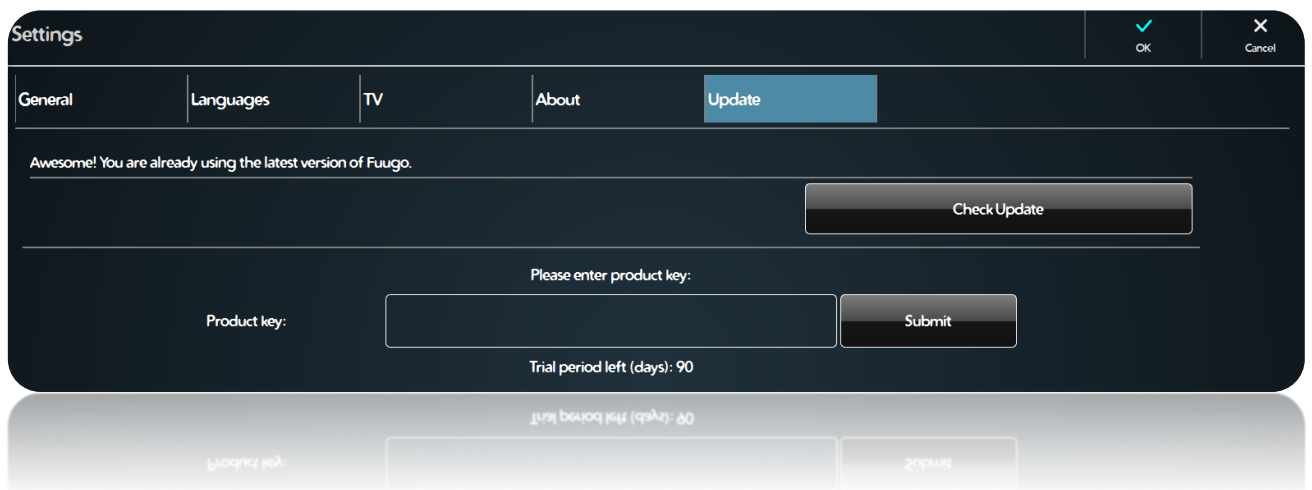
Window mode button (or keyboard key “F”) changes window size smaller. Button is located in the view bar. In the small window, channels can be changed normally by swiping left/right, or PgUp/PgDown. Also volume can be controlled normally with +/- buttons. To return to Full Screen view, double click the video or press “F” key.

9. Settings

From the Settings menu the user can adjust and alter several properties affecting the behavior and appearance of the application. Settings menu can be accessed through View bar.

Updating Fuugo

Fuugo can be easily updated to the latest version via the Internet. First check if there is a newer version available by clicking on “Check Update”. If Fuugo finds a newer version, it can be downloaded by clicking on “Download Update”. It may take some time to download the update. After the installer package has been downloaded, it can be installed by clicking on “Install Update”. When the latest version of Fuugo has been installed, follow the on-screen instructions.



Channel Search

In Settings menu channel search can be started. You can choose the country where you are located from the country specific channel search. Fuugo will find you the channels from your area.

If channels are not found, please make sure that the receiver antenna is properly attached to the Fuugo USB receiver. You may also need to change the location in order to improve the signal quality. In case of traveling, you may want to search for the local channels with the country specific channel search. You may also want to update your channels in case of new channels are available in your area.

Parental Control

Fuugo offers you a possibility to activate the Parental Control from the Settings menu. You can set the age limit for TV programs, in scale from one to eighteen years. In order to activate the Parental Control password is needed, the default password is 1234 and it can be changed. After Parental control is activated, a lock symbol is shown in Program Guide for restricted TV programs.

When Parental Control is set, Fuugo will automatically filter all TV programs that are over the set age limit. Note, that in some countries Parental Control information is not available in the national TV broadcasting.

