

---

# USB TV Stick Quick Installation Guide

## About USB TV Stick

Thanks for you choose USB Box. This manual will provide quickly installation information. If you want know more about application software, please refer relative software manual.

## Product Features

- ◆ High speed USB2.0 port, USB2.0 power
- ◆ Global TV receiving(PAL/NTSC/SECAM)
- ◆ Listen to FM Radio
- ◆ Supports Nicam, Stereo and mono program
- ◆ With Video capture function
- ◆ With Time-Shifting function
- ◆ Schedule TV recording and save directly to your HDD
- ◆ Still image function, save image to BMP file

## System Requirements

- ◆ P4-1.7GHz CPU or higjer
- ◆ 256 MB RAM (minimum), or 512 MB RAM (recommended)
- ◆ VGA card with 32MB
- ◆ CD-ROM
- ◆ Microsoft DIRECTX9.0 or higher
- ◆ Windows XP Serivce Pack2/Vista
- ◆ One free USB2.0 port
- ◆ Available 50M HDD (install driver and application), add 600M/h-3G/h for recording

## Package Contents

USB TV Stick

Remote Control

USB2.0 cable

Multi Cable

Software (Included Manual)

## USB TV Stick Connection:

## Driver and Software installation

Step1: OS will remind a new hardware-- "New Hardware Device" was found. Please choose "Cancel",



Step2: When insert CD, OS will promote setup automatically. Click **“Software Install”**, or browse the CD to run **USB\_TV\_Stick.exe**.



Step3: Choose setup language

Step4: Click “yes” to install Window Media Format9

Step5: Click “Next” to entry MYGICA Install Shield Wizard.

Step6: Click “Browse” to choose installation route, then click “Next” (Default route is better)

Step7: Choose install the components, and click “Next”

Step8: Installation need connect hardware device, please connect USB TV Stick to USB2.0 port.

Step9:Click “Install” to continue installation driver

Step10: OS will promote to install devices , Click “Continue Anyway”





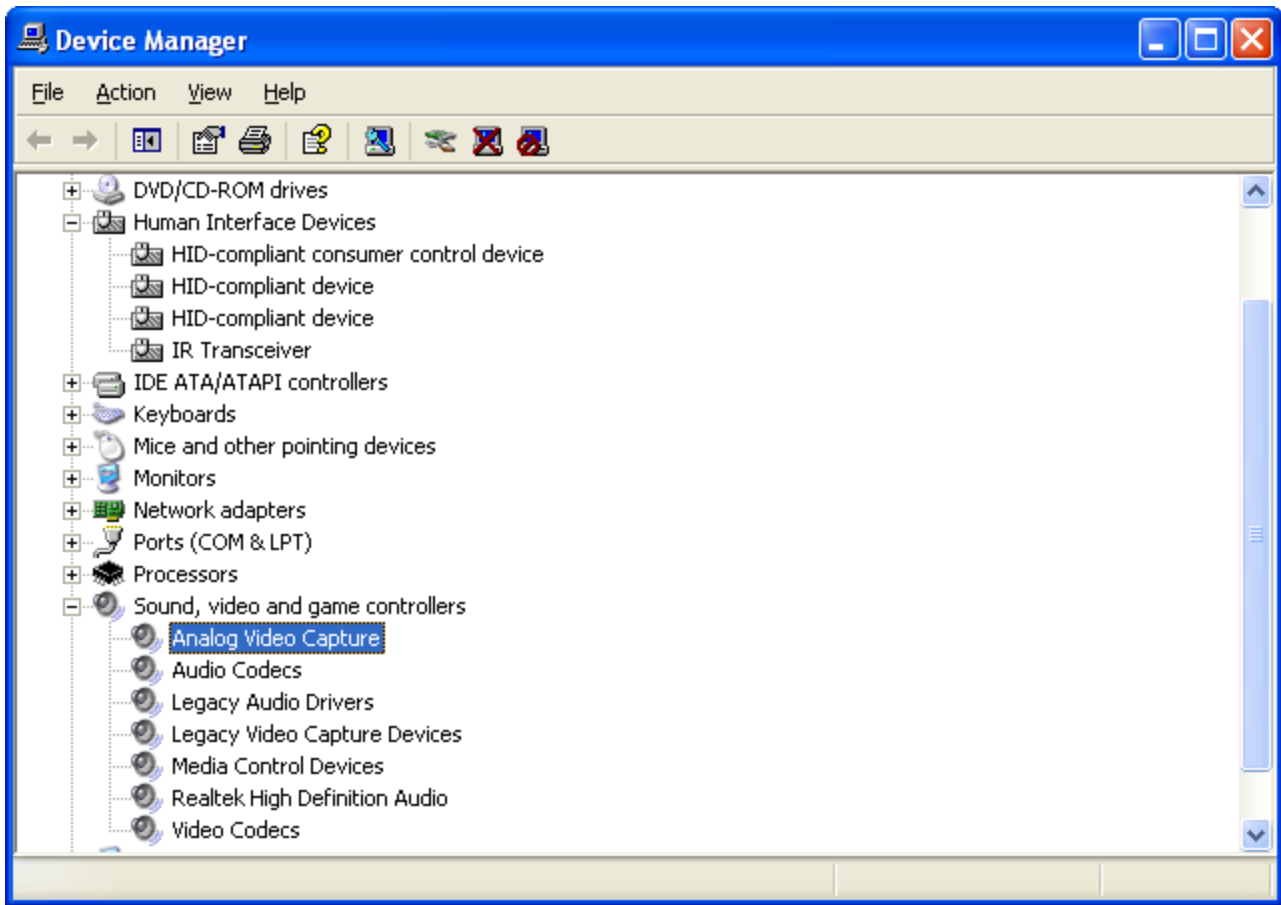
Step11: Click "Finish" to completely install the Driver Software.

Step12: Click "finish" to finish installation.

Step13: You will see that MYGICA TV icons will appear on your desktop.

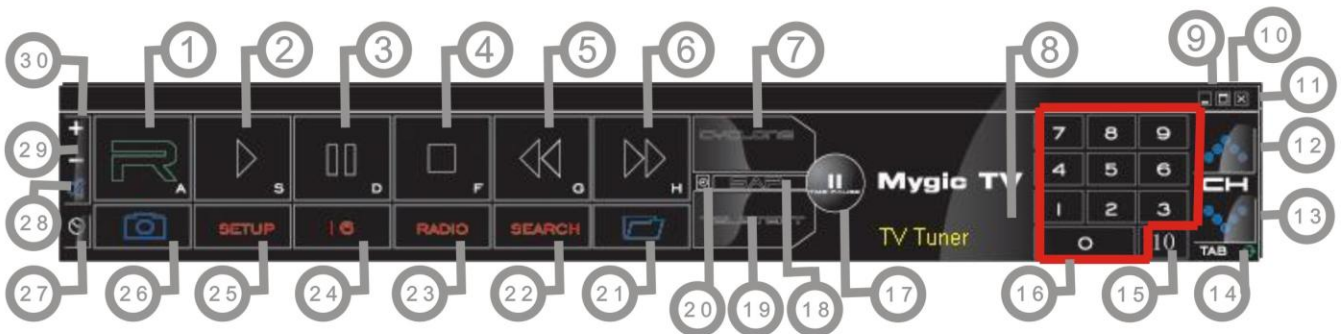


Step14: When its finished, please check on Control panel, select "System"—"System properties"—"Device Manager", you can see three devices which new drivers are installed.



Remark: Please refer E-Manual for using software.

## Mygica TV User Interface

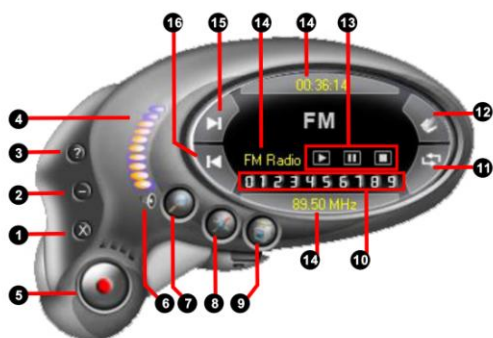


NO	Description	NO	Description
1	Start to record	16	Digit keys
2	Play recorded files	17	Time-shifting

3	Pause	18	Shift stereo
4	Stop	19	Teltext
5	Back forward	20	Shift video source
6	Fast forward	21	Open the recorded file
7	Hue control	22	Auto scan channel
8	Status window	23	Switch to FM
9	Minimize	24	16 channels preview
10	Full screen, Window and video desktop switch	25	Setting Setup menu
11	Exit Mygica TV	26	Snapshot
12	Jump to next channel	27	Schedule recording
13	Jump to last channel	28	Mute
14	Back to previous channel	29	Volume down
15	Ten channels	30	Volume up

Note: Functions with \* are not suitable for this product.

## FM Interface



NO	Description	NO	Description
1	Exit FM	9	Shift to TV
2	Minimize	10	Channel digit key
3	FM copyright	11	Back to preview channel
4	Volume bar	12	Open recorded files
5	Start Record	13	Play recorded files Pause/stop recorded files Stop play next recorded files
6	Mute	14	Display window state
7	Auto scan channel	15	Jump to next channel
8	Setup menu	16	Jump to last channel

## Remote Control and key description

Key	Description
-----	-------------



NO	
1	Switch input source: Switch from TV, Composite video
2	Turn On/Off Mygica TV application software
3	Digital Keys
4	Return to previous channel
5	Single/double/triple digit
6	CH+.CH-; Channel Up/Down VOL+.VOL-; Volume Up/Down Mute
7	Brightness up
8	Brightness down
9	AUD:Stereo/Mono
10	TTX; Teletext
11	Record: Record/stop Play: Play recorded files Pause Stop/record Fast forward Back forward Auto scan channel Snapshot Setup menu Full screen window and video desktop switch FM: Switch to FM Power off: Off PC.

## FAQ:

### Q1: Why is the image discontinuit:y?

- A1: 1. Please try others USB slot in your PC.  
2. Please check If the OS requirement is lower than the minimum request.  
3. DirectX Show. Please check if the VGA card supports Direct Show.  
4. Please Upgrade your PC to Windows XP Service pack2.

### Q2: Why do the drive not be installed?

- A2: 1. Please check if the name of Facility Management is USB TV Stick.  
2. Update DIRECTX9.0C is belonging to CD.

### Q3: Why can not see the image ?

- A3: 1. Try to pull out reinsert application.  
2. Try to reinstall driver.

---

**Q4: Why do the color and sound have problem when watching TV?**

A4: Please check if the “Country and Zone” is correct.

Remark: The accessories and bundled software may not be the exactly same as this manual. The specifications are subject to change without notice.