

80g书纸，1C双面印刷
风琴折，折后
105x140mm

ATSC/QAM A681B User Manual

Chapter 1 Overview

Important Notice: “All channels are subject to coverage and may be changed from time to time. Reception may depend on the type and condition of your existing aerial. Aerial upgrade may be required. Please confirm coverage in your area.” We strongly recommend that you install an outdoors antenna when you use the DTV receiver indoors.

Note:

1. Terrestrial digital wireless broadcast signal may be affected by topography, objects and weather. This would cause a poor signal quality. Therefore, we strongly suggest you to use a rooftop antenna when received indoors.
2. This product is moveable but not be suitable of using in a high speed moving environment. Please check other associated products for these requirements.
3. When you use the function of pre-recording, real time recording or time shifting, please make sure you have enough hard disk space to save huge recording data.
4. In order to operate properly, please follow the user manual and suggestive setup. Improper operations may cause the system unstable or crash. Before you remove hard disk devices, please check other related application has been closed. We reserves the right to add or delete the application and its functions; all new release drives and application will be mentioned in our website. We are not responsible for further notice.

1.1 Introduction

- Decoder Setting
- Recorded TV Location
- Schedule Recording
- Channel Setting
- Menu Description(Right Click Mouse)
- HiDTV Description
- Video Recording
- Recorded file playback
- Snapshot
- Preview
- Time-shifting function
- EPG
- Video Windows description
- PIP

1.2 System requirements

Pentium 2.4 GHz or above

4G RAM memory or above

With 1GB memory of the graphics card or built-in display chip

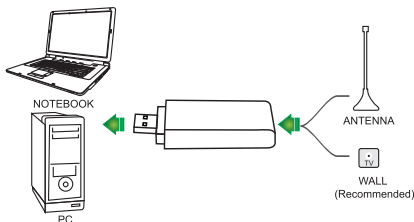
Sound Card

CD-ROM driver (when install software and drivers)

OS: Windows XP Service Pack2/Vista/Windows7/Windows8/windows10

Microsoft direct X 9.0 or above

2.1 Hardware Connection



Chapter 2 How to install driver and software

Windows Driver and Software download link: www.mygica.com/support

3.1 Driver Installation:

Step1: OS will remind a new hardware — “**New Hardware Device**” was found. Please choose “**Cancel**”

Step2: Click “**Next**” to continue installation

Step3: Click **Install** to begin the installation.

Step4: Click “**Finish**” to completely install the Driver Software.

3.2 Software installation

Step5: Click “**HiDTV_2.9.3.3 Install**”

Step6: Installation of HiDTV, Choose setup language

Step7: Click “**Next**” to continue installation

Step8: If you want to change the destination folder, please click “**Browse**” and click “**next**” (Recommended is better)

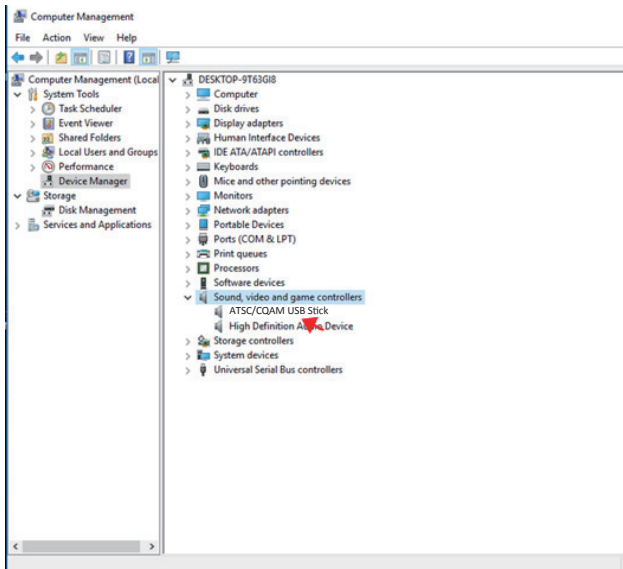
Step9: Please click "**Next**"

Step10: Click "**Finish**", the Hidtv software is installed on your computer.

Step11: You will see that HiDTV application icons will appear on your desktop.



Step12: When its finished, please check on Control panel, select "**System**"—"System properties"—"**Device Manager**", you can see three devices which new driver is installed.



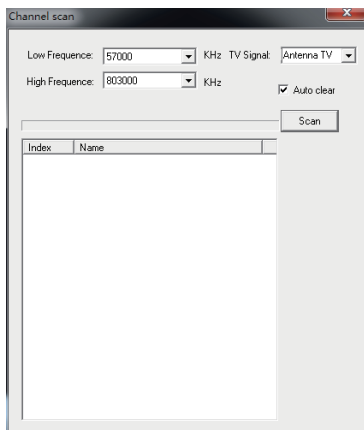
HiDTV user interface

Welcome to HiDTV. A most powerful multimedia application that allows you to access and work with Digital TV, recorded TV Programs, Radio from your PC and Laptop. It supports multi channels preview and recording at same time.

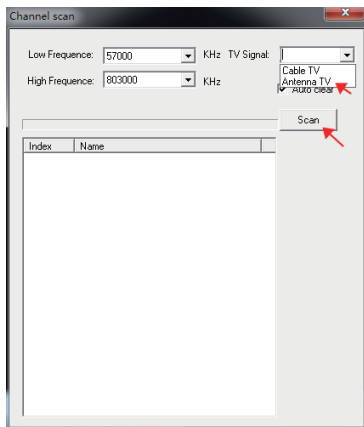


1	Minimize window	10	Signal strength display window
2	Full screen/window switch	11	Setting: Record file format setting. Hardware setting Recorded file location setting. Schedule Recording setting
3	Exit HiDTV software	12	EPG: open HiDTV EPG window
4	Playback (time-shifting,) Recorded file playback	13	Available channel list
5	Video: record the current playing audio and video to the special image files	14	Volume adjustment
6	Stop: stop the current video program Stop the current replay video files Stop auto scan channels	15	Mute:
7	Channel edit: Scan channel automatically rename the current channel, add favorite channel	16	Time-shifting and pause of playback:
8	Current input source or channel name display	17	Recorded file playback
9	Hardware description		

1. Please double click HIDTV.exe software, then click on the menu



2. Select Antenna TV/Cable TV, Click " scan channels" to scanning channel



3. Choose to stop and play after the channels been scanned.



Frequency Ask Question (FAQ)

1. Can not lock any program channel when auto scan.

1. Please check if there is ATSC/QAM broadcast program in your area;
2. Please check if your signal condition is too weak, try to move the antenna around and re-scan again, it is better to move the antenna near the window
3. Please check you connect the antenna and tightly
4. Please check you select right country in the Total Media software scan function page.
5. Please try to use an outdoor antenna and scan once more.

2. I do find some channels,, but this time I get fewer channels than last time

1. Maybe you moved antenna's position or angle, try to find the better position and keep the antenna vertical
2. The weather also can affect your receiving signal quality, if the weather is bad today, that is the reason
3. In some new start DVBT broadcasting area, the provider of ATSC/QAM broadcasting, may change their broadcasting power from day to day, try to find a best power strength.
4. If you put a CAN of cola on the antenna, that will make signal weak, please move them away.

3. When I watch program, Screen blacked out when playing or freezes on first picture.

Unfortunately, you are in a weak signal condition. You can see that from the Yellow light on the top of ATSC/QAM TV STICK. The reason is same as question 2.

4. Video playing but Audio failed

Please check the sound card or the volume setting.

5. Watching TV some time freeze or slow, also audio stroke

1. Please check your PC is not Pentium 3 or 2, ATSC/QAM TV STICK need a high CPU to decoding DVBT stream
2. Please check you VGA driver is properly installed and updated
3. Please don't run another high CPU loading software such as game and CAD.